

Project Name: Sunworld Arista (Ph-2 T-5,7,8,9), Club  
RERA Reg. No.: UPRERAPRJ11625  
RERA Website: <https://www.up-rera.in>  
Name of the Bank: ICICI Bank  
Collection A/c. Title : NIMBUS PROJECTS LTD COLLECTION A/C FOR  
SUNWORLD ARISTA PH2 T5,7,8,9, CLUB  
Collection Account No.: 777705570708  
IFSC Code: ICIC0005707  
Project Launch Date: 25/07/2025



# THE ARISTA LUXE

SECTOR 168, NOIDA EXPRESSWAY

The True Connoisseurs of Living




# Inspired by Heritage. DESIGNED FOR TOMORROW.

The Arista Luxe brings British architectural elegance into the heart of Noida featuring stately facades, intricate detailing, all blended with modern-day functionality







THE TRUE  
CONNOISSEURS  
OF LIVING

IN THE HEART  
OF NOIDA

10 Acres Total Project  
Area Consisting 10 Towers

An Exclusive, Luxuriously  
Curated Club Area

1.6 Lakh (Sq. Ft.)  
Landscape

Air Conditioned  
Double Height Lobby

Dedicated Drop Off  
for Each Tower

Fully Decked Up  
Residences

Expansive Balconies with  
Yamuna and Forest View

342\* Exclusive Luxe  
Residences Phase 2

11 Ft. Floor To  
Floor Height

High Speed Lifts  
In Each Tower

Theater In  
Dedicated Tower

Home  
Automation

65% of the Project Dedicated  
to Open Areas

7 Conceptualized  
Pools







## HELLO

Mary Kom, the iconic Indian boxer and Olympic medallist, embodies resilience, determination, and excellence—values that resonate deeply with Nimbus Realty. As our brand ambassador, she symbolises the spirit of perseverance and the pursuit of greatness, which define our vision in the luxury real estate space. Just as Mary Kom has consistently raised the bar in her sport, Nimbus Realty is committed to setting new benchmarks in quality, integrity, and innovation

*Mary Kom*





LEGACY OF NIMBUS REALTY

12 Million Sq. ft. Area | 12 Projects | 8500+Happy Customers

3 DECADES  
OF TRUST







Comprises of

DUPLEX | PENTHOUSES  
3+1, 4+1 & 5+2 BHK LUXE RESIDENCES





ABOVE THE WORLD.  
BEYOND THE EXPECTED





## PERFECTLY POSITIONED

Nestled in Noida’s most coveted enclave, The Arista Luxe offers seamless access to corporate hubs, elite schools, and leisure destinations—a address that speaks of privilege and convenience.



### DISTANCE

NOIDA INTERNATIONAL AIRPORT	51 MIN	NOIDA GOLF COURSE	24 MIN
BUDDH INTERNATIONAL CIRCUIT	20 MIN	NOIDA CITY CENTER	27 MIN
PARI CHOWK	16 MIN	DND FLYOVER	18 MIN
AMITY CHOWK	15 MIN	KALINDI KUNJ	20 MIN









## WHY SECTOR **168** NOIDA



Noida's Sector 168 is fast becoming a byword for elevated urban living. With its panoramic green corridors, seamless metro access, and an evolving skyline, it is not just a location—it is a destination for those who belong ahead of their time.



**AMITY UNIVERSITY**  
SECTOR 125 | **15 MIN**

**BIMTECH**  
KNOWLEDGE PARK 22  
GREATER NOIDA | **15 MIN**

**GAUTAM BUDDHA UNIVERSITY**  
YAMUNA EXPRESSWAY | **20 MIN**

**SHARDA UNIVERSITY**  
YAMUNA EXPRESSWAY | **20 MIN**

**NOIDA INTERNATIONAL UNIVERSITY**  
SECTOR 17 A,  
YAMUNA EXPRESSWAY | **25 MIN**

**JAYPEE HOSPITAL**  
SECTOR 128 | **15 MIN**

**FORTIS HOSPITAL**  
SECTOR 62 | **35 MIN**

**APOLLO HOSPITAL**  
SECTOR 26 | **30 MIN**

**SHIV NADAR SCHOOL**  
SECTOR 168 | **2-3 MIN**

**THE SHRIRAM MILLENNIUM SCHOOL**  
SECTOR 135 | **2-3 MIN**

**GENESIS GLOBAL SCHOOL**  
SECTOR 132 | **10 MIN**

**DPS NOIDA**  
SECTOR 132 | **10 MIN**

**JBM INTERNATIONAL SCHOOL**  
SECTOR 132 | **20 MIN**

**LOTUS VALLEY SCHOOL**  
SECTOR 126 | **20 MIN**

**PATHWAYS SCHOOLS**  
SECTOR 100 | **20 MIN**

**UNIVERSITIES**

**HOSPITALS**

**SCHOOLS**



**CONNECTIVITY**

**HOTEL &  
LIFESTYLE  
DISTRICT**

**SHOPPING**

**MULTIPLEXES**

DND FLYWAY | **18 MIN**  
FNG EXPRESSWAY | **5 MIN**  
YAMUNA EXPRESSWAY | **5 MIN**  
NOIDA INTERNATIONAL AIRPORT | **51 MIN**  
HINDON AIRPORT | **70 MIN**  
INDIRA GANDHI INTERNATIONAL AIRPORT | **70 MIN**

LODHI HOTEL | **23 MIN**  
TAJ MAN SINGH | **24 MIN**  
OBEROI HOTEL | **25 MIN**  
JAYPEE GREENS GOLF COURSE, GREATER NOIDA | **20 MIN**  
NOIDA GOLF COURSE, SECTOR 43 | **25 MIN**

**MALL OF INDIA**  
SECTOR 18 NOIDA | **20 MIN**

**GREAT INDIA PLACE**  
SECTOR 18 NOIDA | **20 MIN**

**GARDENS GALLERIA**  
SECTOR 18 | **20 MIN**

**GRAND VENICE**  
GREATER NOIDA | **25 MIN**

**LOGIX CITY CENTRE MALL**  
SECTOR 31 NOIDA | **25 MIN**

**PVR**  
MALL OF INDIA  
SECTOR 18 NOIDA | **20 MIN**

**PVR SUPERPLEX**  
LOGIX CITY MALL  
SECTOR 32, NOIDA | **25 MIN**

**CARNIVAL CINEMAS**  
GREAT INDIA PLACE  
SECTOR 18, NOIDA | **20 MIN**









## THE MINDS BEHIND THE ART

# SBOSE

Landscape Architects

MS. SANJU BOSE  
THE ARCHITECT OF SERENITY

A landscape specialist with a passion for nature-infused design, Sanju Bose crafts serene green spaces that enrich the soul of Arista Luxe. Her thoughtful artistry turns every garden into a tranquil escape.

Architect  
Hafeez  
Contractor

MR. HAFEEZ CONTRACTOR  
THE MAESTRO OF SKYLINES

India's most celebrated architect, Hafeez Contractor brings a legacy of iconic designs that blend grandeur with purposeful living. His visionary approach redefines urban luxury with timeless elegance.

bobby mukherji  
architects

MR. BOBBY MUKHERJI  
THE CONNOISSEUR OF ELEGANCE

Globally acclaimed for luxury interiors, Bobby Mukherji brings refined sophistication to every corner of Arista Luxe. His designs elevate living into an immersive, indulgent experience.

B L O C B. L. GUPTA

MR. B.L. GUPTA  
TRUSTED CRAFTSMANSHIP

B. L. Gupta Construction (P) Ltd. is a well established Private Limited Company based in New Delhi and engaged in the construction activities as a prime contractor. Led by the Managing Director, Er. B. L. Gupta, it comprises a group of enterprising professionals with a corporate philosophy based on quality and efficiency.

CRAFTED BY RENOWNED ARCHITECTS





Swirl into Grandeur:  
Where Luxury Meets  
the Apex of Living.

IMAGE FOR REPRESENTATION PURPOSE ONLY



# LUXE RESIDENCES

SECTOR 168, NOIDA



RENDERED IMAGE





## Yamuna & Forest View from Balcony 8-10 Ft Sky Deck

Awaken to the tranquil flow of the Yamuna, where every sunrise paints the sky and every sunset whispers serenity. This balcony is not just a space—it's a front-row seat to nature's masterpiece.









# INSPIRATION BEHIND THESE PILLARS

Meticulously crafted, The Arista Luxe harmonizes British architectural heritage with contemporary brilliance. Soaring arches, regal columns, and bespoke finishes come together to create a living testament to timeless elegance.

The Ionic columns draw inspiration from classical Greek design, later embraced and refined in British architecture during the Georgian and Neoclassical eras. Symbolizing wisdom, order, and civic pride, these columns became defining features of esteemed institutions such as courthouses, museums, and universities. In the British context, they represent not just aesthetic harmony, but enduring values tradition, learning, and enlightened governance.





IMAGE FOR REPRESENTATION PURPOSE ONLY



A night scene of a luxury resort. In the foreground, a large, rectangular swimming pool with blue water reflects the lights from the building and the sky. The pool is surrounded by a wooden deck with lounge chairs, tables, and umbrellas. In the background, a large, white, two-story building with a central domed section and a tall apartment tower on the left are illuminated. The sky is dark blue with a crescent moon and stars. Palm tree fronds are visible in the top right corner.

*a grand canvas of life,  
curated in luxury*





**Club  
Aristaire**





RENDERED IMAGE





RENDERED IMAGE





AN UNMATCHED ·—·  
**JUXTAPOSITION OF**  
VIVACITY AND BEAUTY





RENDERED IMAGE





RENDERED IMAGE



# 65+

## PREMIUM AMENITIES

---

From curated greens to sculpted serenity, every amenity at  
The Arista Luxe is a pause from the ordinary.  
It is a life that flows effortlessly from rejuvenation to revelry —  
stitched together by design, drenched in elegance.





- Ball Room
- Virtual Golf Arena
- Mini Theater
- Spa
- Squash Facility Double Height G+1
- Cafeteria
- Kids’ Zone
- Gym
- Library
- Yoga Room
- Table Tennis
- Games Room
- Pool Table

- Foos ball
- Billiards
- Padel Court
- Pickleball Court
- Badminton Court
- Kids’ Play Area
- Senior Citizen Area
- Dedicated Club Drop-Off
- Tree & Sculpture Court
- Juice Bar
- Dog Play Area
- Alfresco Plaza
- Stepped Garden

- Picnic Lawn
- Orchard & Seating Nodes
- Amphitheater
- Preteen Area
- Yoga & Meditation Area
- Mounds
- Tot-Lot Area
- Festival Court
- Wet Play Area
- Shrub Beds
- Open Seating Area

- **7 Conceptualized Pools**
  - Lap Pool
  - Family Pool
  - Lounge Pool
  - Beach Pool
  - Kids’ Pool
  - Shallow Pool
  - Jacuzzi Area



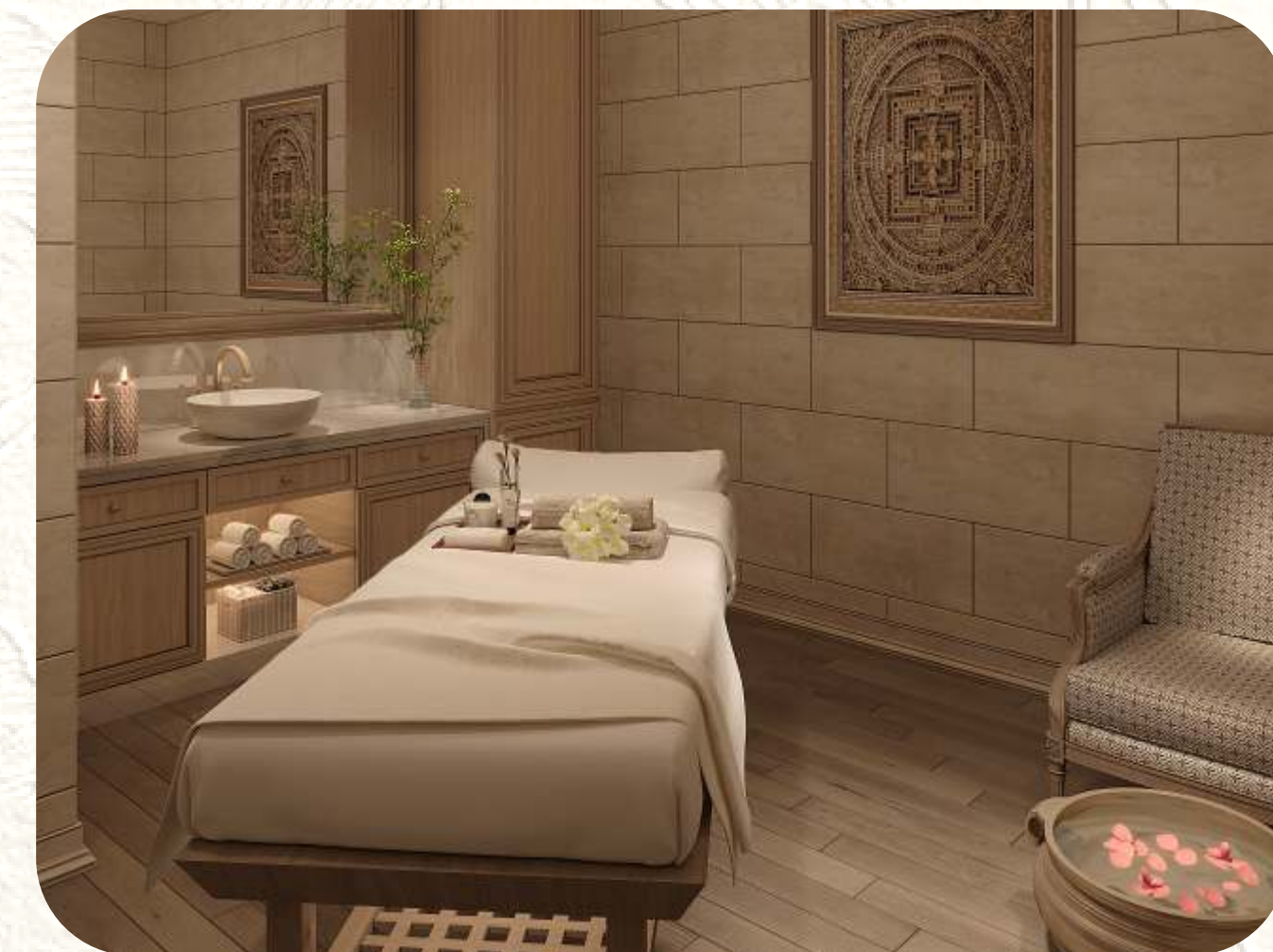






RENDERED IMAGES





RENDERED IMAGES









# TOWER LOBBY

---

From curated greens to sculpted serenity, every amenity  
at The Arista Luxe is a pause from the ordinary.  
It is a life that flows effortlessly from rejuvenation to revelry stitched  
together by design, drenched in elegance.  
Welcoming you first is the grand double-height,  
air-conditioned lobby a timeless statement of arrival.





RENDERED IMAGES





# Design Mastery

Step into interiors where restraint meets richness. Marble underfoot, sunlight draped across velvet walls, silence punctuated by design. These are not rooms. These are moods, composed for those who understand the art of arrival.







# Mastered for Serenity

Step into a bedroom where restraint meets richness.  
Marble underfoot, morning light brushing textured walls, and a hush that speaks  
of thoughtful design. This isn't just a room, it's a mood.  
A private retreat, composed for those who understand the art of arrival  
and the luxury of rest.







# MASTER LAYOUT



LEGEND

1. ENTRANCE PLAZA

2. PADDLE COURT

3. PICKLEBALL

4. BADMINTON COURT

5. CLUB

6. KIDS PLAY AREA

7. LAP POOL AREA

8. FAMILY POOL AREA

9. LOUNGE POOL

10. BEACH POOL

11. KIDS POOL

12. JACUZZY AREA

13. SENIOR CITIZEN AREA

14. CLUB DROP OFF

15. TREE & SCULPTURE COURT

16. JUICE BAR

17. DOG PLAY AREA

18. ALFRESCO PLAZA

19. STEPPED GARDEN

20. PICNIC LAWN

21. ORCHARD & SEATING NODES

22. AMPHITHEATRE

23. PRE-TEEN AREA

24. YOGA & MEDITATION

25. TOT LOT AREA

26. FESTIVAL COURT

27. WET PLAY AREA

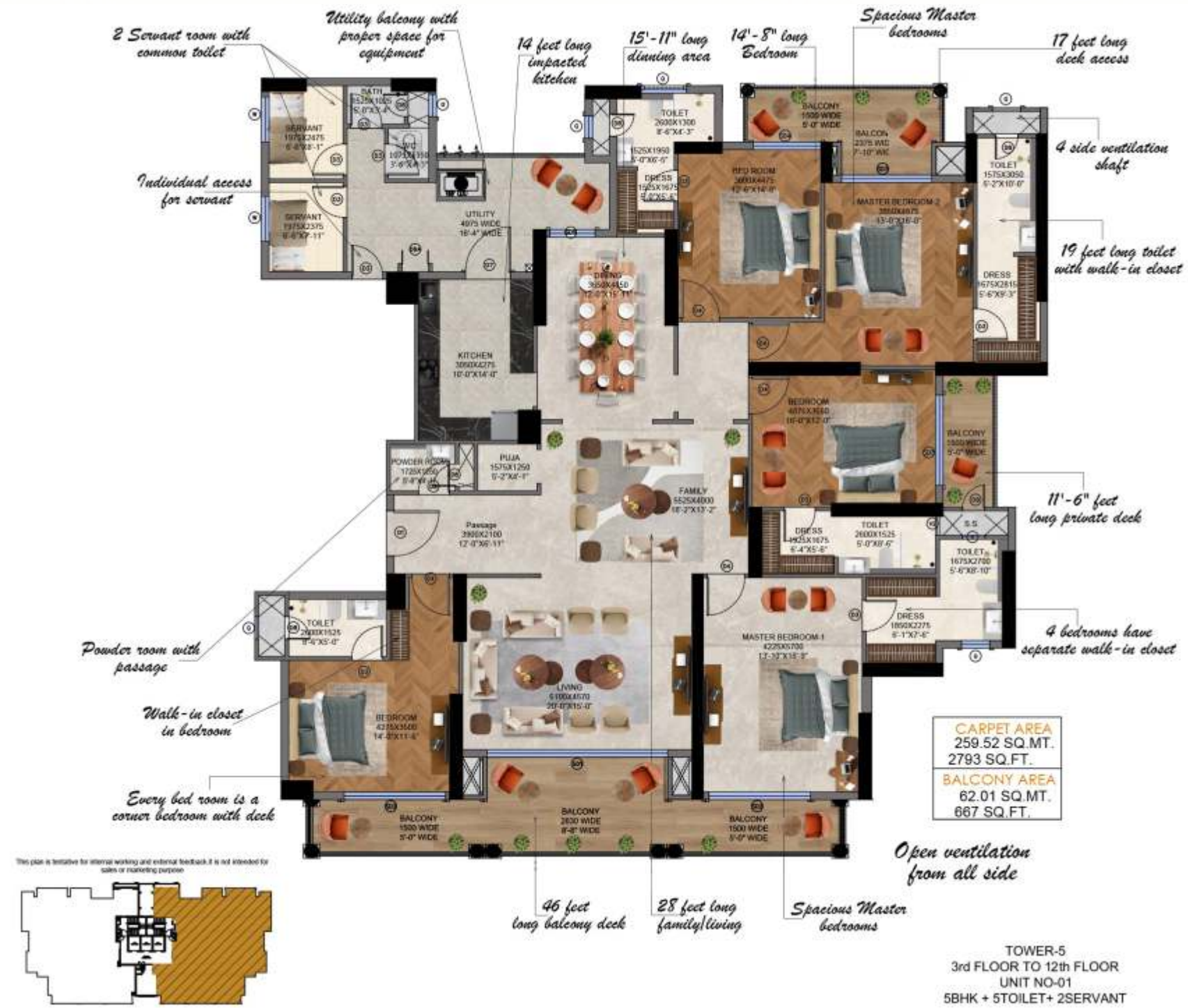
28. SHRUB BEDS

29. OPEN SEATING AREA

<div></div>	5 BHK + 5 TOI + 2 SERV. - 471.85 SQM
<div></div>	4 BHK + 4 TOI + 1 SERV. - 373.93 SQM
<div></div>	4 BHK + 4 TOI + 1 SERV. - 287.81 SQM
<div></div>	3 BHK + 3 TOI + 1 SERV. - 222.33 SQM
<div></div>	3 BHK + 3 TOI + 1 SERV. - 219.87 SQM
<div></div>	3 BHK + 3 TOI + 1 SERV. - 218.62 SQM





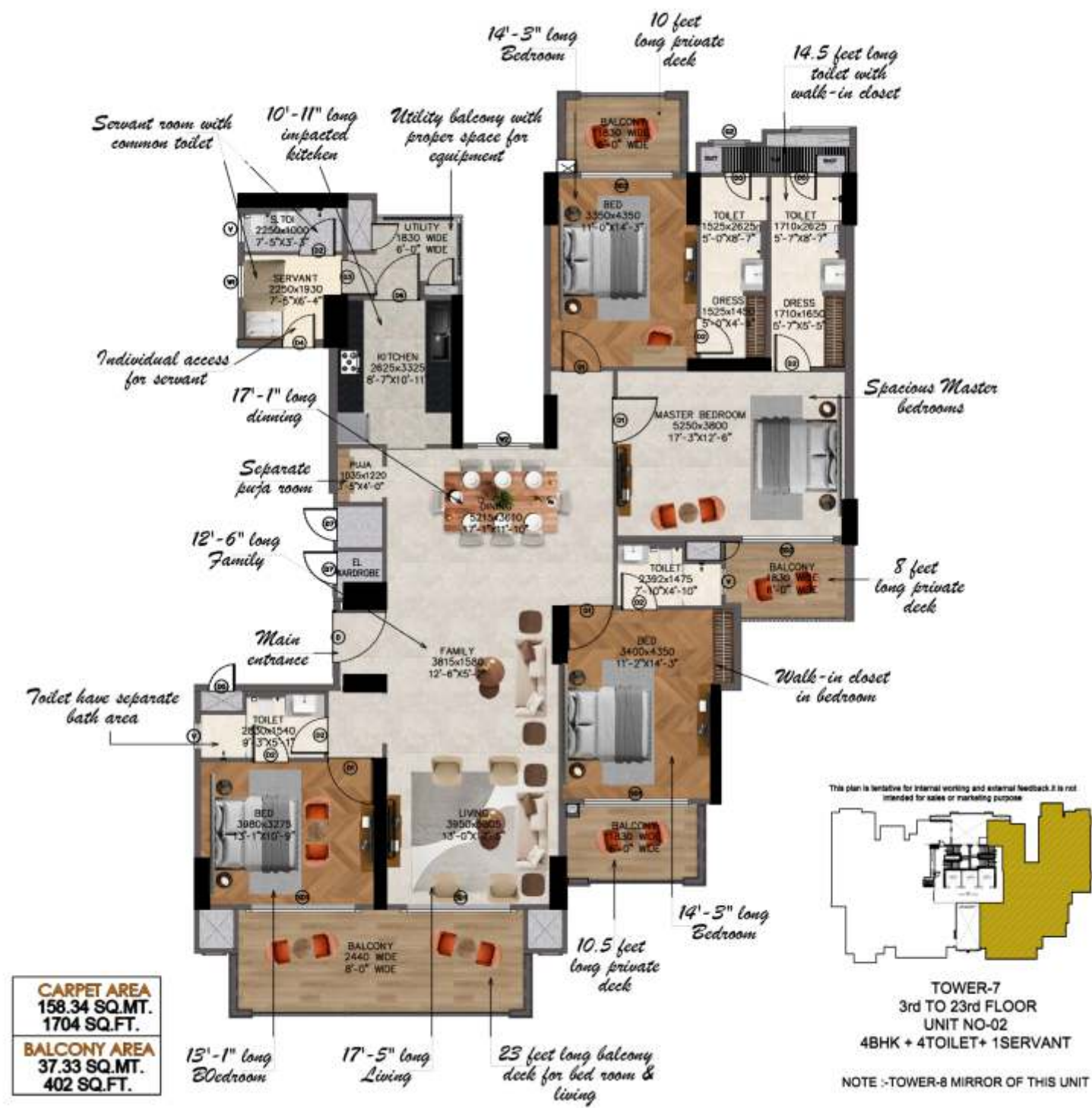


T-5, UNIT PLAN-01









T-7, UNIT PLAN-02

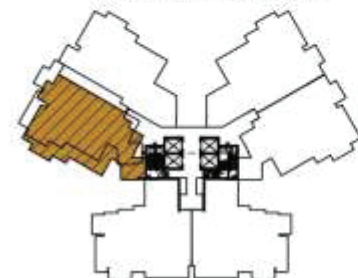








This plan is tentative for internal working and external feedback it is not intended for sales or marketing purpose



TOWER-9  
3rd FLOOR TO 29th FLOOR  
& 31st FLOOR  
UNIT NO-03  
3BHK + 3TOILET+ 1SERVANT  
NOTE: UNIT NO 06 MIRROR OF UNIT NO-03

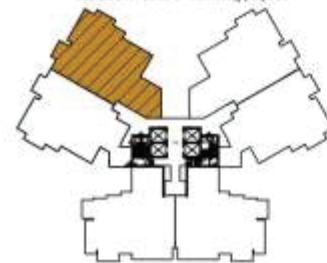
CARPET AREA
120.93 SQ.MT.
1302 SQ.FT.
BALCONY AREA
30.66 SQ.MT.
330 SQ.FT.

## T-9, UNIT PLAN-03





This plan is tentative for internal working and external feedback. It is not intended for sales or marketing purpose.



TOWER-9  
3rd FLOOR TO 29th FLOOR  
& 31st FLOOR  
UNIT NO-04  
3BHK + 3TOILET+ 1SERVANT  
NOTE: UNIT NO 05 MIRROR OF UNIT NO-04

CARPET AREA
120.24 SQ.MT.
1294 SQ.FT.
BALCONY AREA
33.83 SQ.MT.
364 SQ.FT.

## T-9, UNIT PLAN-04



SUNWORLD ARISTA- TOWER 5, 7 & 8 SPECIFICATIONS		
STRUCTURE	Earthquake resistant R.C.C. framed structure	
	Tower Construction Design On Imported Mivan Shuttering With Approx 11 Feet Floor To Floor Height Of Each Floor.	

LIVING & DINING ROOM		
LOCATION	MATERIAL SPECIFICATIONS	BRANDS /COLOUR/DESIGN OPTION
FLOORS	IMPORTED MARBLE ( ITALIAN )	AS/ SELECTION
EXTERNAL DOORS & WINDOWS	DGU-ENERGY EFFICIENT GLASS/ TINTED/ REFLECTIVE/ CLEAR GLASS WITH ALLUMINIUM FRAMES	AS/ SELECTION
INTERNAL WALLS	ACRYLIC EMULSION PAINT	ASIAN PAINTS/BERGER/ NEROLAC OR EQUIVALENT
CEILING	AS PER DESIGN WITH CONCEALED LED LIGHTS IN CEILING & COVES	AS/ SELECTION
EXTERNAL WALLS	EXTERNAL GRADE WEATHER RESISTANT PAINT	ASIAN PAINTS/BERGER/ NEROLAC OR EQUIVALENT
MAIN DOORS & FRAME	IMPORTED FLUSH DOOR , FINISHED WITH VENEER, HEIGHT -APPROX 9 FEET	AS/ SELECTION

BEDROOMS		
LOCATION	MATERIAL SPECIFICATIONS	BRANDS /COLOUR/DESIGN OPTION
FLOORS	ITALIAN MARBLE IN MASTER BED ROOM-1 & BRANDED WOODEN FLOOR IN OTHER BED ROOMS & MASTER BEDROOM-2 IN TOWER-5 AND ITALIAN MARBLE IN MASTER BED ROOM & BRANDED WOODEN FLOOR IN OTHER BED ROOMS IN TOWER-7,8	AS/ SELECTION
EXTERNAL DOORS & WINDOWS	DGU-ENERGY EFFICIENT GLASS/ TINTED/ REFLECTIVE/ CLEAR GLASS WITH ALLUMINIUM FRAMES	AS/ SELECTION
EXTERNAL WALLS	EXTERNAL GRADE WEATHER RESISTANT PAINT	ASIAN PAINTS/BERGER/ NEROLAC OR EQUIVALENT
INTERNAL WALLS/CEILING	CORNICE +ACRYLIC EMULSION PAINT OF APPROPRIATE COLOUR	ASIAN PAINTS/BERGER/ NEROLAC OR EQUIVALENT
INTERNAL DOORS & FRAME	LAMINATED FLUSH DOOR HEIGHT - APPROX 8 FEET	AS/ SELECTION
HARDWARE AND LOCKS	STAINLESS STEEL /BRASS FINISHED HARDWARE FITTINGS FOR DOORS AND LOCKS OF BRANDED MAKES	HETTICH/HAFFELY/YALE OR EQUIVALENT



TOILETS & POWDER ROOM		
LOCATION	MATERIAL SPECIFICATION	BRANDS /COLOUR/DESIGN OPTION
FLOORS	PREMIUM QUALITY ANTI SKID VITRIFIED TILE	KAJARIA/ SIMPOLO OR EQUIVALENT
EXTERNAL DOORS & WINDOWS	DGU-ENERGY EFFICENT GLASS/ TINTED/ REFLECTIVE/ CLEAR GLASS WITH ALLUMINIUM FRAMES	AS/ SELECTION
TILE CLADDING	TILES 8'- 0" ON ALL SIDES	KAJARIA/ SIMPOLO OR EQUIVALENT
CEILING	ACRYLIC EMULSION PAINT ON CEILING/ MOISTURE - PROOF BOARD FALSE CEILING	ASIAN PAINTS/ BERGER/ NEROLAC OR EQUIVALENT
INTERNAL DOORS	FLUSH DOOR ,FINISHED WITH PU POLISH ,HEIGHT - APPROX 8 FEET	AS/ SELECTION
INTERNAL WALLS	ACRYLIC EMULSION PAINT	ASIAN PAINTS/ BERGER/ NEROLAC OR EQUIVALENT
FIXTURES & FITTINGS	PREMIUM QUALITY	GROHE/ KOHLER/ TOTO/ARTIES OR EQUIVALENT
COUNTER	GRANITE /ENGINEERED STONE	AS/ SELECTION
CARPENTRY	MIIROR WITH VANITY CABINET	AS/ SELECTION
BATH AREA	GLASS CUBICAL SHOWER AREA	

KITCHEN		
LOCATION	MATERIAL SPECIFICATIONS	BRANDS /COLOUR/DESIGN OPTION
FLOORS	PREMIUM QUALITY VITRIFIED TILES	KAJARIA/SIMPOLO OR EQUIVALENT
EXTERNAL DOORS & WINDOWS	DGU-ENERGY EFFICENT GLASS/ TINTED/ REFLECTIVE/ CLEAR GLASS WITH ALLUMINIUM FRAMES	AS/ SELECTION
INTERNAL WALLS/CEILING	ENGINEERED STONE OR TILES 2'-0 ABOVE COUNTER + PLASTIC PAINT	ASIAN PAINTS/BERGER/ NEROLAC OR EQUIVALENT
FIXTURES & FITTINGS	MODULAR WITH ENGINEERED STONE ON TOP & STAINLESS - STEEL SINK (SS 304 1 MM THICK)	AS/ SELECTION
HARDWARE	BEST QUALITY	HETTICH/HAFFELY OR EQUIVALENT
DRAWERS & CABINETS	SOFT CLOSING BANK/SOFT CLOSE SHUTTERS	HATICH OR EQUIVALENT
MISCELLANEOUS	CHIMNEY, HOB, MICROWAVE, OTG	BOSCH/HAFFELY OR EQUIVALENT

BALCONY		
LOCATION	MATERIAL SPECIFICATIONS	BRANDS /COLOUR/DESIGN OPTION
FLOORS	ANTI SKID VITRIFIED TILES	KAJARIA/ SIMPOLO OR EQUIVALENT
EXTERNAL WALLS	EXTERIOR GRADE TEXTURE PAINT	ASIAN PAINTS/BERGER/ NEROLAC OR EQUIVALENT
RAILINGS	MS RAILING AS PER DESIGN	AS SELECTION
BALCONY WIDTH	APPROX 8 FEET IN TOWER-7 & 8 and 10 FEET IN TOWER 5 WITH LIVING ROOM	AS SELECTION



PUJA ROOM		
LOCATION	MATERIAL SPECIFICATIONS	BRANDS /COLOUR/DESIGN OPTION
FLOORING & SKIRTING	IMPORTED MARBLE ( ITALIAN )	AS/ SELECTION
WALLS	ACRYLIC EMULSION PAINT	ASIAN PAINTS/BERGER/ NEROLAC OR EQUIVALENT
CEILING	ACRYLIC EMULSION PAINT	ASIAN PAINTS/BERGER/ NEROLAC OR EQUIVALENT

SERVANT ROOM		
LOCATION	MATERIAL SPECIFICATIONS	BRANDS /COLOUR/DESIGN OPTION
FLOORING & SKIRTING	VITRIFIED TILES	KAJARIA/ ORIENT BELL/SOMANY OR EQUIVALENT
WALLS	ACRYLIC EMULSION PAINT	ASIAN PAINTS/BERGER/ NEROLAC OR EQUIVALENT
CEILING	ACRYLIC EMULSION PAINT	ASIAN PAINTS/BERGER/ NEROLAC OR EQUIVALENT

SERVANT ROOM TOILET		
LOCATION	MATERIAL SPECIFICATIONS	BRANDS /COLOUR/DESIGN OPTION
FLOORING & SKIRTING	ANTI - SKID VITRIFIED TILES	KAJARIA/ ORIENT BELL/ SOMANY OR EQUIVALENT
WALLS	VITRIFIED TILES UPTO CEILING HEIGHT	KAJARIA/ ORIENT BELL/SOMANY OR EQUIVALENT
CEILING	MOISTURE RESISTANT FALSE CEILLING + ACRYLIC EMULSION PAINT	ASIAN PAINTS/BERGER/ NEROLAC OR EQUIVALENT
FITTING & FIXTURE	WASH BASIN WITH FAUCET, SHOWER DIVERTER	CERA/ ROCA /HINDWARE OR EQUIVALENT



OTHERS		
LOCATION	MATERIAL SPECIFICATIONS	BRANDS /COLOUR/DESIGN OPTION
HVAC	VRV/VRF SYSTEM WITH HEAT AND COOL AND AIR PURIFIER TECHNOLOGY IN LIVING, DINING, AND ALL BEDROOMS	Daikin / Hitachi / Mitshubishi or Equivalent
ELECTRICAL	ALL ELECTRICAL WIRING IN CONCEALED CONDUITS PROVISION FOR ADEQUATE LIGHT AND POWER POINTS, TELEPHONE, AND TV OUTLETS IN LIVING, DINING AND BEDROOMS. MOLDED MODULAR PLASTIC SWITCHES AND PROTECTIVE MCBS.	Smart Keypad
	SMART KEYPAD IN APARTMENT AND NORMAL SWITCHES IN SERVANT ROOM, UTILITY ROOM AND TOILETS.	Normal Switches - Panasonic/ Legrand/ Havells or EQUIVALENT
WOODWORK	IMPORTED STYLISH MODULAR WARDROBE WITH HIGHEST STANDARD HARDWARE	As selection
PLUMBING	AS PER STANDARD PRACTICE , ALL INTERNAL PLUMBING IN CPVC/COMPOSITE. ALL EXTERNAL IN UPVC	As selection
HOME AUTOMATION	LIGHTS/FAN/AC AUTOMATION (AMC CHARGES WILL BE PAID BY CLIENT)	As selection
SECURITY	5 TIER - GATE/ PERIMETER/ PARKING/ LOBBY AND MAIN ENTRANCE DOOR WITH DIGITAL SMART LOCK WITH VIDEO DOOR PHONE IN MAIN ENTRANCE DOOR, SECURED ACCESS FOR LIFTS AND LIFT LOBBIES, ACCESS CONTROLLED RECEPTION AREA IN ALL TOWERS, CCTV SURVEILLANCE INCLUDING LIFTS, INTERCOM AND INTERNET FACILITY, FIRE DETECTION AND SPRINKLER SYSTEM AND GAS LEAKAGE DETECTORS IN APARTMENTS.	As selection
STAIRCASE AREA	M.S RAILING WITH APPROPRIATE PAINT, FLOOR WITH GRANITE AND WALL AND CEILING WITH OBD PAINT	
BASEMENT	TRIMIX FLOORING WITH OBD PAINT IN CEILING, LIFT LOBBY IN BASEMENT AREA WITH GRANITE FLOORING	
LIFT	HIGH SPEED PASSENGER LIFT	OTIS/ MITSHUBISHU / TOSHIBA/HITACHI OR EQUIVALENT
	SERVICE LIFT	OTIS/ KONE/ TOSHIBA OR EQUIVALENT
LIFT LOBBIES	ENTRANCE LIFT LOBBY – GRAND DOUBLE HEIGHT LOBBY WITH AIR-CONDITION, INTERIOR DESIGNED BY INDIA'S RENOWNED ARCHITECT-UTILISING IMPORTED ITALIAN MARBLE FLOOR AND ACRYLIC EMULSION PAINT OF APPROPRIATE COLOUR AND PROVISION OF MUSIC SYSTEM.	
	TYPICAL LIFT LOBBY - AS DESIGNED BY INDIA'S RENOWNED ARCHITECT-UTILISING APPROPRIATE GRANITE FLOORS AND ACRYLIC EMULSION PAINT OF APPROPRIATE COLOUR	
EXTRA RECREATIONAL ACTIVITY	1 AV ROOM,1 GYM & YOGA ROOM FOR TOWER 7 & 8, IN BASEMENT UNDER TOWER 1 AV ROOM,1 GYM & YOGA ROOM FOR TOWER 5, IN BASEMENT UNDER TOWER	



SUNWORLD ARISTA- TOWER 9 SPECIFICATIONS		
Structure	Earthquake resistant R.C.C. framed structure	
	Tower Construction Design On Imported Mivan Shuttering With Approx 11 Feet Floor To Floor Height Of Each Floor.	

	LIVING & DINING ROOM	
LOCATION	MATERIAL SPECIFICATIONS	BRANDS/COLOUR/DESIGN OPTION OR EQUIVALENT
FLOORS	IMPORTED MARBLE (ITALIAN)	AS/SELECTION
EXTERNAL DOORS & WINDOWS	DGU-ENERGY EFFICIENT GLASS/TINTED/ REFLECTIVE/ CLEAR GLASS WITH ALLUMINIUM FRAMES	AS/SELECTION
INTERNAL WALLS	ACRYLIC EMULSION PAINT	ASIAN PAINTS/BERGER/NEROLAC OR EQUIVALENT
CEILING	AS PER DESIGN WITH CONCEALED LED LIGHTS IN CEILING & COVES	AS/SELECTION
EXTERNAL WALLS	EXTERNAL GRADE WEATHER RESISTANT PAINT	ASIAN PAINTS/BERGER/NEROLAC OR EQUIVALENT
MAIN DOORS & FRAME	IMPORTED FLUSH DOOR, FINISHED WITH PU POLISH, HEIGHT-APPROX 9 FEET	AS/SELECTION

	BEDROOMS	
LOCATION	MATERIAL SPECIFICATIONS	BRANDS/COLOUR/DESIGN OPTION OR EQUIVALENT
FLOORS	LAMINATED WOODEN FLOOR	AS/SELECTION
EXTERNAL DOORS & WINDOWS	DGU-ENERGY EFFICIENT GLASS/TINTED/REFLECTIVE/CLEAR GLASS WITH ALLUMINIUM FRAMES	AS/SELECTION
EXTERNAL WALLS	EXTERNAL GRADE WEATHER RESISTANT PAINT	ASIAN PAINTS/BERGER/NEROLAC OR EQUIVALENT
INTERNAL WALLS/CEILING	CORNICE +ACRYLIC EMULSION PAINT OF APPROPRIATE COLOUR	ASIAN PAINTS/BERGER/NEROLAC OR EQUIVALENT
INTERNAL DOORS & FRAME	LAMINATED FLUSH DOOR, HEIGHT -APPROX 8 FEET	AS/SELECTION
HARDWARE AND LOCKS	STAINLESS STEEL/BRASS FINISHED HARDWARE FITTINGS FOR DOORS AND LOCKS OF BRANDED MAKES	HETTICH/YALE OR EQUIVALENT



	TOILETS	
LOCATION	MATERIAL SPECIFICATIONS	BRANDS/COLOUR/DESIGN OPTION
FLOORS	PREMIUM QUALITY ANTI SKID VITRIFIED TILE	KAJARIA/ SIMPOLO OR EQUIVALENT
EXTERNAL DOORS & WINDOWS	DGU-ENERGY EFFICIENT GLASS/TINTED/REFLECTIVE/ CLEAR GLASS WITH ALLUMINIUM FRAMES	AS/SELECTION
TILE CLADDING	TILES 8'-0" ON ALL SIDES	KAJARIA/SIMPOLO OR EQUIVALENT
CEILING	ACRYLIC EMULSION PAINT ON CEILING/ MOISTURE-PROOF BOARD FALSE CEILING	ASIAN PAINTS/BERGER/NEROLAC OR EQUIVALENT
INTERNAL DOORS	FLUSH DOOR, FINISHED WITH PU POLISH, HEIGHT-APPROX 8 FEET	AS/SELECTION
INTERNAL WALLS	ACRYLIC EMULSION PAINT	ASIAN PAINTS/BERGER/NEROLAC OR EQUIVALENT
FIXTURES & FITTINGS	PREMIUM QUALITY	KOHLER/JAQUAR/ROCA OR EQUIVALENT
COUNTER	GRANITE/ENGINEERED STONE	AS/SELECTION
CARPENTRY	MIRROR WITH VANITY CABINET	AS/SELECTION
BATH AREA	GLASS CUBICAL SHOWER AREA	

	KITCHEN	
LOCATION	MATERIAL SPECIFICATIONS	BRANDS/COLOUR/DESIGN OPTION
FLOORS	VITRIFIED TILES	KAJARIA/ SIMPOLOOR EQUIVALENT
EXTERNAL DOORS & WINDOWS	DGU-ENERGY EFFICIENT GLASS/TINTED/REFLECTIVE/ CLEAR GLASS WITH ALLUMINIUM FRAMES	AS/SELECTION
INTERNAL WALLS/CEILING	ENGINEERED STONE 2'-0 ABOVE COUNTER + PLASTIC PAINT	ASIAN PAINTS/BERGER/ NEROLAC OR EQUIVALENT
FIXTURES & FITTINGS	MODULAR WITH ENGINEERED STONE ON TOP & STAINLESS STEEL SINK (SS 304 1 MM THICK)	AS/SELECTION
HARDWARE	BEST QUALITY	HETTICH/HAFFLE OR EQUIVALENT
DRAWERS & CABINETS	SOFT CLOSING BANK/SOFT CLOSE SHUTTERS	HETICH OR EQUIVALENT
MISCELLANEOUS	CHIMNEY, HOB, MICROWAVE, OTG	BOSCH/HAFFELY OR EQUIVALENT

	BALCONY	
LOCATION	MATERIAL SPECIFICATIONS	BRANDS/COLOUR/DESIGN OPTION
FLOORS	ANTI SKID VITRIFIED TILES	KAJARIA/SIMPOLO OR EQUIVALENT
EXTERNAL WALLS	EXTERIOR GRADE TEXTURE PAINT	ASIAN PAINTS/BERGER/NEROLAC OR EQUIVALENT
RAILINGS	MS RAILING AS PER DESIGN	AS SELECTION
BALCONY WIDTH	APPROX 10 FEET WITH LIVING ROOM	AS SELECTION



	SERVANT ROOM	
LOCATION	MATERIAL SPECIFICATIONS	BRANDS/COLOUR/DESIGN OPTION
FLOORING & SKIRTING	VITRIFIED TILES	KAJARIA/ORIENT BELL/SOMANY OR EQUIVALENT
WALLS	ACRYLIC EMULSION PAINT	ASIAN PAINTS/BERGER/NEROLAC OR EQUIVALENT
CEILING	ACRYLIC EMULSION PAINT	ASIAN PAINTS/BERGER/NEROLAC OR EQUIVALENT

	SERVANT ROOM TOILET	
LOCATION	MATERIAL SPECIFICATIONS	BRANDS/COLOUR/DESIGN OPTION
FLOORING & SKIRTING	ANTI-SKID VITRIFIED TILES	KAJARIA/ORIENT BELL/SOMANY OR EQUIVALENT
WALLS	VITRIFIED TILES UPTO CEILING HEIGHT	KAJARIA/ ORIENT BELL/SOMANY OR EQUIVALENT
CEILING	MOISTURE RESISTANT FALSE CEILLING + ACRYLIC EMULSION PAINT	ASIAN PAINTS/BERGER/NEROLAC OR EQUIVALENT
FITTING & FIXTURE	WASH BASIN WITH FAUCET, SHOWER DIVERTER	CERA/ROCA/HINDWARE OR EQUIVALENT



	OTHERS	
LOCATION	MATERIAL SPECIFICATIONS	BRANDS/COLOUR/ DESIGN OPTION
HVAC	CASSTE AC SYSTEM WITH HEAT AND COOL AND AIR PURIFIER TECHNOLOGY IN LIVING, DINING, AND ALL BEDROOMS	Daikin/Hitachi / Mithubishi OR EQUIVALENT
ELECTRICAL	ALL ELECTRICAL WIRING IN CONCEALED CONDUITS PROVISION FOR ADEQUATE LIGHT AND POWER POINTS, TELEPHONE, AND TV OUTLETS IN LIVING, DINING AND BEDROOMS. MOLDED MODULAR PLASTIC SWITCHES AND PROTECTIVE MCBS.	Smart Keypad
	SMART KEYPAD IN APARTMENT AND NORMAL SWITCHES IN SERVANT ROOM, UTILITY ROOM AND TOILETS.	Normal Switches - Panasonic/Legrand/ Havells OR EQUIVALENT
WOODWORK	IMPORTED STYLISH MODULAR WARDROBE WITH HIGHEST STANDARD HARDWARE	As selection
PLUMBING	AS PER STANDARD PRACTICE, ALL INTERNAL PLUMBING IN CPVC/COMPOSITE. ALL EXTERNAL IN UPVC	As selection
HOME AUTOMATION	LIGHTS/FAN/AC AUTOMATION (AMC CHARGES WILL BE PAID BY CLIENT)	As selection
SECURITY	5 TIER-GATE/PERIMETER/PARKING/LOBBY AND MAIN ENTRANCE DOOR WITH DIGITAL SMART LOCK WITH VIDEO DOOR PHONE IN MAIN ENTRANCE DOOR, SECURED ACCESS FOR LIFTS AND LIFT LOBBIES, ACCESS CONTROLLED RECEPTION AREA IN ALL TOWERS, CCTV SURVEILLANCE INCLUDING LIFTS, INTERCOM AND INTERNET FACILITY, FIRE DETECTION AND SPRINKLER SYSTEM AND GAS LEAKAGE DETECTORS IN APARTMENTS.	As selection
STAIRCASE AREA	M.S RAILING WITH APPROPRIATE PAINT, FLOOR WITH GRANITE AND WALL AND CEILING WITH OBD PAINT	
BASEMENT	TRIMIX FLOORING WITH OBD PAINT IN CEILING, LIFT LOBBY IN BASEMENT AREA WITH GRANITE FLOORING	
LIFT	HIGH SPEED PASSENGER LIFT	OTIS/ MITSHUBISHU/TOSHIBA OR EQUIVALENT
	SERVICE LIFT	OTIS/KONE/TOSHIBA OR EQUIVALENT
LIFT LOBBIES	ENTRANCE LIFT LOBBY - GRAND DOUBLE HEIGHT LOBBY WITH AIR-CONDITION, INTERIOR DESIGNED BY INDIA'S RENOWNED ARCHITECT-UTILISING IMPORTED ITALIAN MARBLE FLOOR AND ACRYLIC EMULSION PAINT OF APPROPRIATE COLOUR AND PROVISION OF MUSIC SYSTEM.	
	TYPICAL LIFT LOBBY - AS DESIGNED BY INDIA'S RENOWNED ARCHITECT-UTILISING APPROPRIATE GRANITE FLOORS AND ACRYLIC EMULSION PAINT OF APPROPRIATE COLOUR	



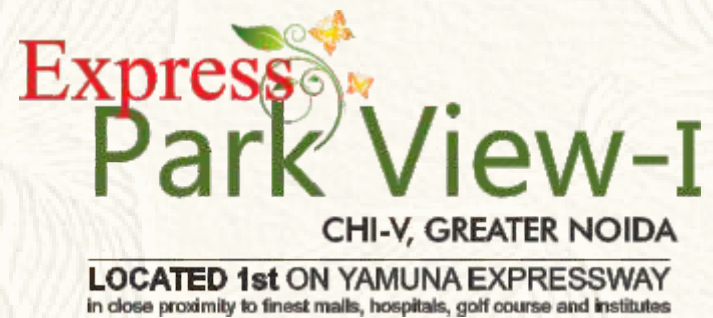
# OUR PROJECTS



 **THE HYDE PARK**  
SECTOR 78, NOIDA

  
CHI-V, GREATER NOIDA  
LOCATED AT YAMUNA EXPRESSWAY

  
CHI-V, GREATER NOIDA  
LOCATED 1st ON YAMUNA EXPRESSWAY  
in close proximity to finest malls, hospitals, golf course and institutes

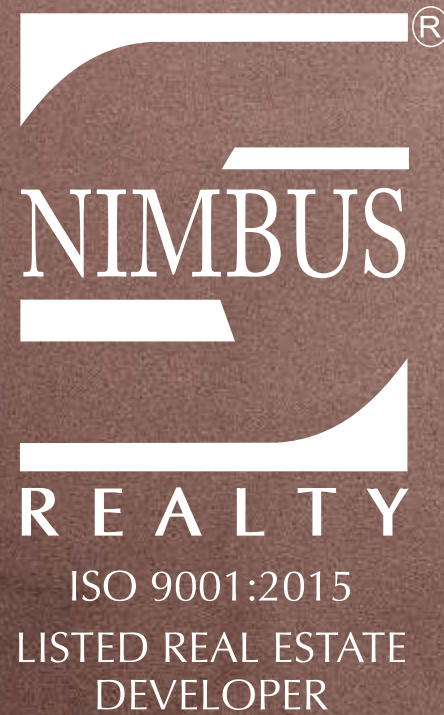
  
CHI-V, GREATER NOIDA  
LOCATED 1st ON YAMUNA EXPRESSWAY  
in close proximity to finest malls, hospitals, golf course and institutes

  
**NIMBUS**  
**THE PALM VILLAGE**  
YAMUNA EXPRESSWAY  
SECTOR 22A

  
**GP**  
**THE GOLDEN PALMS**  
SECTOR 168, NOIDA



Project Name: Sunworld Arista (Ph-2 T-5,7,8,9), Club  
RERA Reg. No.: UPRERAPRJ11625  
RERA Website: <https://www.up-rera.in>  
Name of the Bank: ICICI Bank  
Collection A/c. Title : NIMBUS PROJECTS LTD COLLECTION A/C FOR  
SUNWORLD ARISTA PH2 T5,7,8,9, CLUB  
Collection Account No.: 777705570708  
IFSC Code: ICIC0005707  
Project Launch Date: 25/07/2025

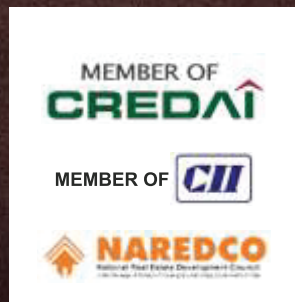


## NIMBUS PROJECTS LIMITED

Registered Office : 1001-1006, 10th Floor, Narain Manzil,  
23, Barakhamba Road, New Delhi-110001, India.  
Phone: +91 11 43020300

Site Address : Sector 168, Nodia Expressway  
GH-1C, Arista, Sector 168, Noida,  
Uttar Pradesh, Pincode: 201305, India.

Lead Promoter-Nimbus Projects Ltd | Project Name-Sunworld Arista (Ph-2 T-5,7,8,9), Club



Project is mortgaged with and funded by Bajaj Housing Finance Limited. No objection Certificate / Permission to Mortgage from Bajaj Housing Finance Limited will be provided for sale of flats



**For Sale Queries Call: +91 8695 707070 | Email: [info@nimbusgroup.net](mailto:info@nimbusgroup.net) | [www.nimbusrealty.in](http://www.nimbusrealty.in) / [www.nimbusgroup.net](http://www.nimbusgroup.net)**

**Disclaimer:** This is not an legal offer, an invitation to offer and/or commitment of any nature. The images include artistic impressions and stock images The details of Project, Apartment/Unit including but not limited to designs, dimensions, cost facilities, plans, images, specifications, furniture, accessories, paintings, items, electronic goods, additional fittings/fixtures, decorative items, false ceiling including finishing materials, specifications, shades, sizes and colour of the tiles and other details shown in the images are only indicative in nature and are only for the purpose of illustrating/indicating a possible layout and may not form part of the standard specifications/amenities/services to be provided in the Project, Apartment/Unit intending buyers are advised to use their discretion in relying on the information/amenities described/shown therein. All specifications of the Project, Apartment/ Unit shall be as per the documents/information uploaded by the company on the website of UPRERA and the agreement between the parties. Users are advised not to base purchasing decisions solely on promotional contents or visual depictions. For verified, updated and accurate project information please visit the official website of UPRERA. The Promoter disclaims responsibility for any information available through third party websites, emails, social media platforms, or external links. Any reliance on such sources shall be at the user's sole risk. the promoter shall not be liable for any loss or damage resulting for such reliance. Project details, specifications and features may be modified, amended or updated without prior notice, in compliance with applicable laws and regulations. 1 sq. mtr. is equal to 10.764 sq. ft.